

# Foundation Stage Summer 2019

April 2019

Dear Parents and Carers

## Foundation Projection of Work – Summer 2019

Our themes for this term are Let's Get Growing and Journeys. As part of our topic on growing we will be going on a visit to Manor Farm, as well as watching caterpillars grow.

### **Our School Vision Statements:**

Give Your Best

#### **Our Vision:**

"A school at the heart of the community, which provides an exciting, challenging and supportive learning environment, where every child fulfils their potential."

#### **Our Mission:**

"To provide a high quality, inclusive learning environment which promotes and celebrates high standards of progress and attainment in academic, sporting and creative learning."

#### **Our Community:**

"To maintain positive and effective partnerships between parents and the community, and preserve and develop our religious character through working with the local churches."

### PSED

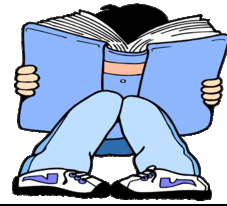
- Resolving conflict
- Circle time
- British Values
- CARES code



## Communication, Language and Literacy

Jack and the Beanstalk and The Gingerbread Man

- Phonics
- Writing – labels, captions, story writing and rhymes.
- Speaking and listening activities



## Understanding the World

- Technology – how to use computer software programmes
- People – changes in our lives, personal preferences
- The World – growing, seasons, animals.



## Number and Shape, Space and Measure

- Number – problem solving using addition and subtraction, counting in 2's, 5's and 10's, doubling and halving.
- Shape - time and money.



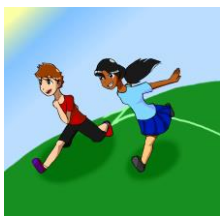
## Creative Development

- Being imaginative – role play, singing, dance, art and design.



## Physical Development

- Outdoor P.E – athletics - throwing, running, catching, passing.
  - Indoor P.E – gymnastics



### P.E lessons

Our P.E lessons will take place on a Friday. This will involve an indoor session and an outdoor session. We ask that your child's kit is in school at all times and will be sent home at the end of each half term. Please make sure your child has kit that is suitable for the weather, including socks.

# School Rules

- Follow instructions with thought and care
- Keep hands, feet and unkind thoughts to ourselves
- Walk quietly through the school

St. Bartholomew's Primary school web site  
[www.st-bartholomews.leics.sch.uk](http://www.st-bartholomews.leics.sch.uk)

Frontier  
[frontier.com/Leicestershire/](http://frontier.com/Leicestershire/)

## St Bartholomew's CARES

- **C** - **Co-operate** kindly with others
  - **A** - **Aware** that everyone is important and individual
  - **R** - **Respect** others and take **Responsibility** for our actions
  - **E** - **Enjoy** school and be **Enthusiastic**
  - **S** - achieve **Success** through challenging ourselves to;
- GIVE YOUR BEST**

## Collective Worship Theme

We welcome all faiths and those of no faith to our worship.

We will be thinking about our Christian values:-

- The Mustard Tree - Matthew 17:20 Nothing will be impossible for you.
- 'Travelling on ...' Looking at travels, pilgrimages etc



### Homework Timetable

**Wednesday** - This term we will be sending out phonics homework weekly and a number choice board for each half term.

Should you wish to email one of the Foundation Stage teachers, here are our contact details:

[sgarland@st-bartholomews.leics.sch.uk](mailto:sgarland@st-bartholomews.leics.sch.uk)

[yprice@st-bartholomews.leics.sch.uk](mailto:yprice@st-bartholomews.leics.sch.uk)

[sdixon@st-bartholomews.leics.sch.uk](mailto:sdixon@st-bartholomews.leics.sch.uk)

As teachers only have one planning session per week, please allow up to 7 days for a reply – thank you.

Should you need to contact Mrs Boston for **serious matters** the email address is:

[headteacher@st-bartholomews.leics.sch.uk](mailto:headteacher@st-bartholomews.leics.sch.uk)